



AML21CBA3AC



AML21 Series, Electronic Control Pushbutton, Square, Standard Bezel, Lighted, 1 Incandescent Lamp, DPDT, Momentary Action, Snap in panel mount

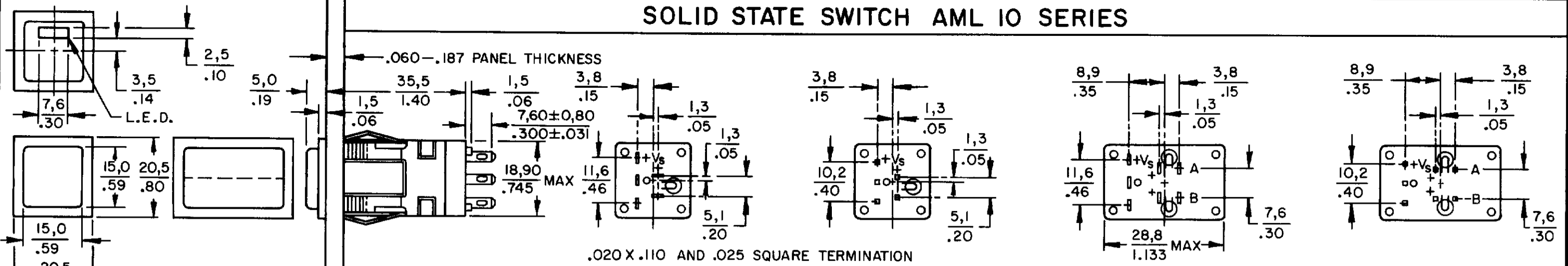
Features

- 1, 2, or 4 poles.
- Silver or gold contacts.
- Full guard bezel option.
- Momentary or 2-level alternate action (push-on, push-off).
- UL recognized, CSA certified.
- Lamps can be furnished installed or ordered separately.
- Lamp circuit independent of switch circuit.

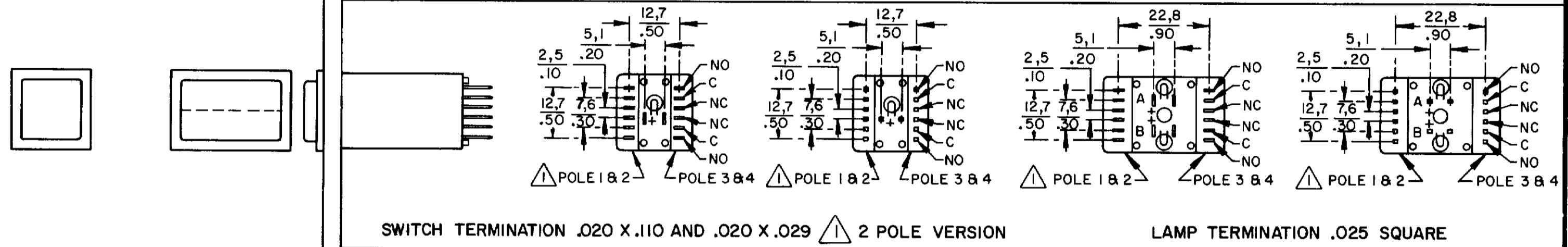
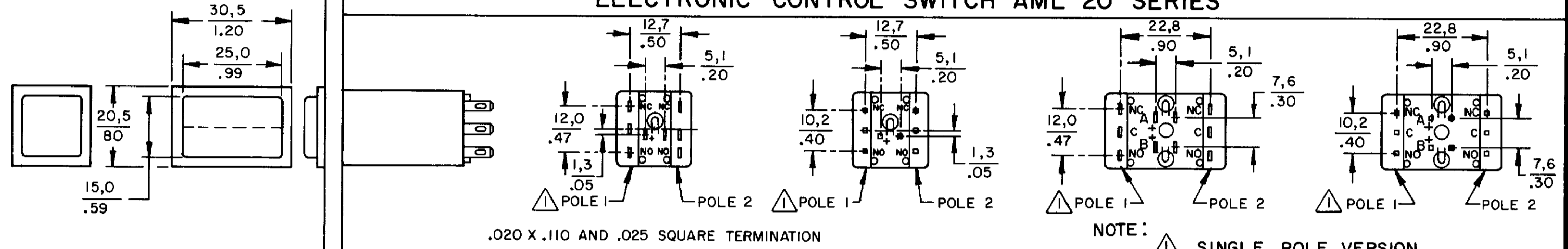
Product Specifications	
Product Type	MICRO SWITCH™ Pushbutton
Housing Type	Square
Circuitry	DPDT
Action	Momentary Action
Mounting	Snap-in Panel
Lamp Type	Lighted, 1 Incandescent Lamp
Termination	.025 x .025 (Printed Circuit, or Push-On)
Ampere/Voltage Range (Resistive Load)	0.4-2 A @ 0.5-30 Vdc, 0.4-2 A @ 0.5 -250 Vac, 0.4-3 A @ 0.5-125 Vac
LED/Lamp/Neon Voltage	No Lamp Installed
Comment	use AML51 button
Availability	Global
UNSPSC Code	30211913
UNSPSC Commodity	30211913 Push button switches
Series Name	AML21

AML PUSHBUTTON AND INDICATOR SERIES

SOLID STATE SWITCH AML 10 SERIES

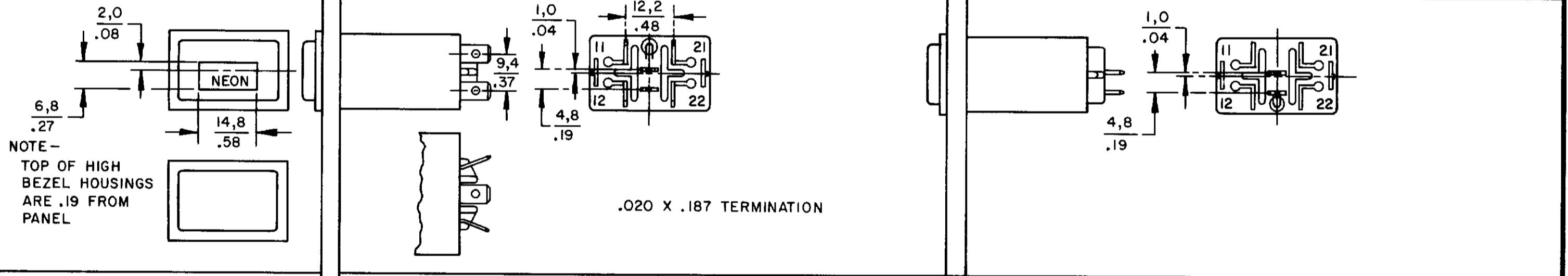


ELECTRONIC CONTROL SWITCH AML 20 SERIES

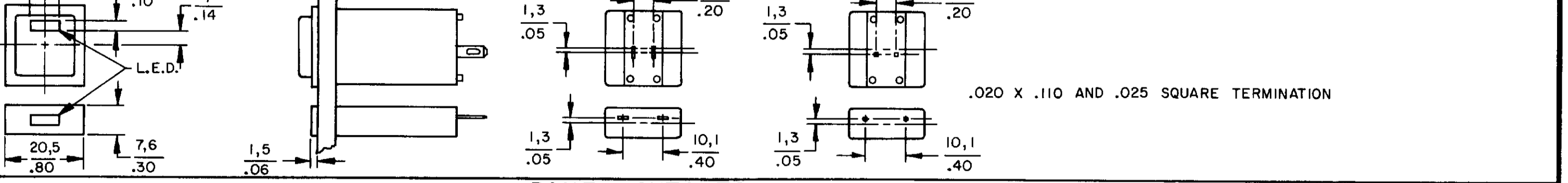
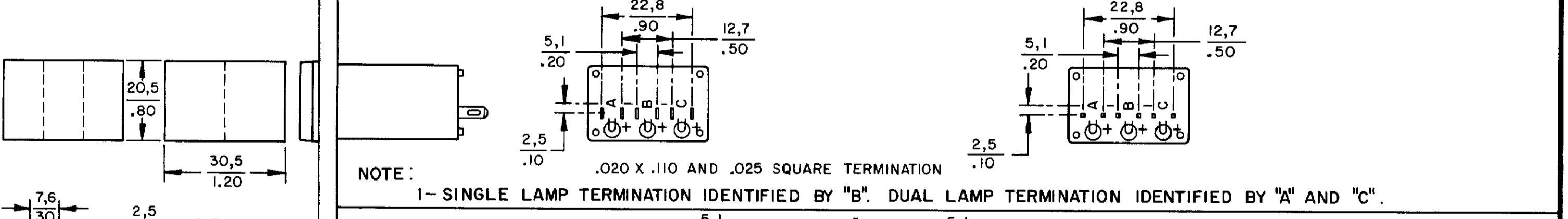
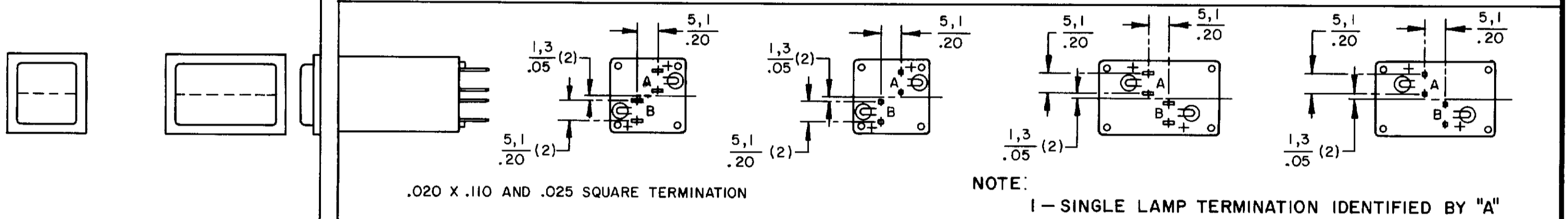


POWER SWITCH AML 30 SERIES

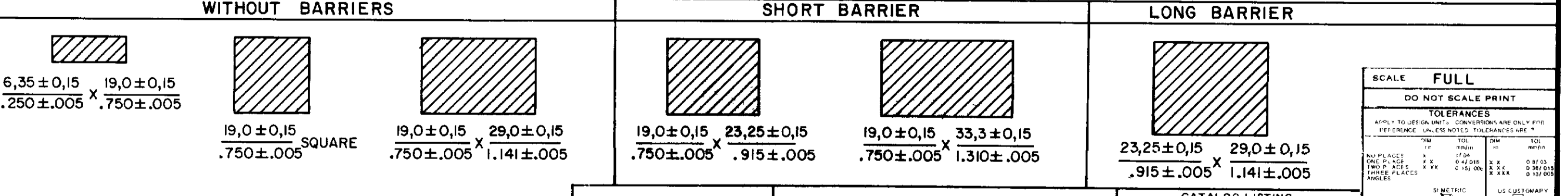
LINE POWER IND AML 43 SERIES



INDICATORS AML 40 SERIES



PANEL CUTOUTS



CATALOG LISTING
AML 10 20 30 40
PAGE 1 OF 1 SERIES CHART 1
ISSUE 6
RELEASE NO. CO-78498
REPLACES & 40 SERIES
CHECK JAF 11 JUL 94
CHECK JAF 11 JUL 94
DRAWN JAK 17 JUN 94
RASTER